

20

# PAVIMENTOS FLOORINGS

PAVIMENTOS FABRICADOS Y CERTIFICADOS CONFORME:

EN 14904 · EN 14877 · EN 15330

FLOORINGS MANUFACTURED AND CERTIFIED ACCORDING:

EN 14904 · EN 14877 · EN 15330

- A Deportivo Sports flooring
- B Gimnasio Aerobic and gymnastic flooring
- C Vestuarios Changing room flooring
- D Civil Civil
- E Césped artificial Artificial turf grass



**GALVAN**  
SPORT



A

POLIDEPORTIVOS INDOOR FLOORINGS  
FABRICADOS EN PVC MADE OF PVC



P259 – T

Pavimento GRABO MEGA de PVC espesor 10 mm. con certificados FIBA & IHF.  
GRABO MEGA flooring made of PVC thickness 10 mm. certified by FIBA & IHF.

*Imagen/Picture A*

P2561 – T

Pavimento GRABO EXTREME de PVC espesor 8 mm. con certificados FIBA & IHF.  
GRABO EXTREME flooring made of PVC thickness 8 mm. certified by FIBA & IHF.

*Imagen/Picture A*

P257 – TS

Pavimento GRABO SUPREME de PVC espesor 6,7 mm. con certificados FIBA & IHF.  
GRABO SUPREME flooring made of PVC thickness 6.7 mm. certified by FIBA & IHF.

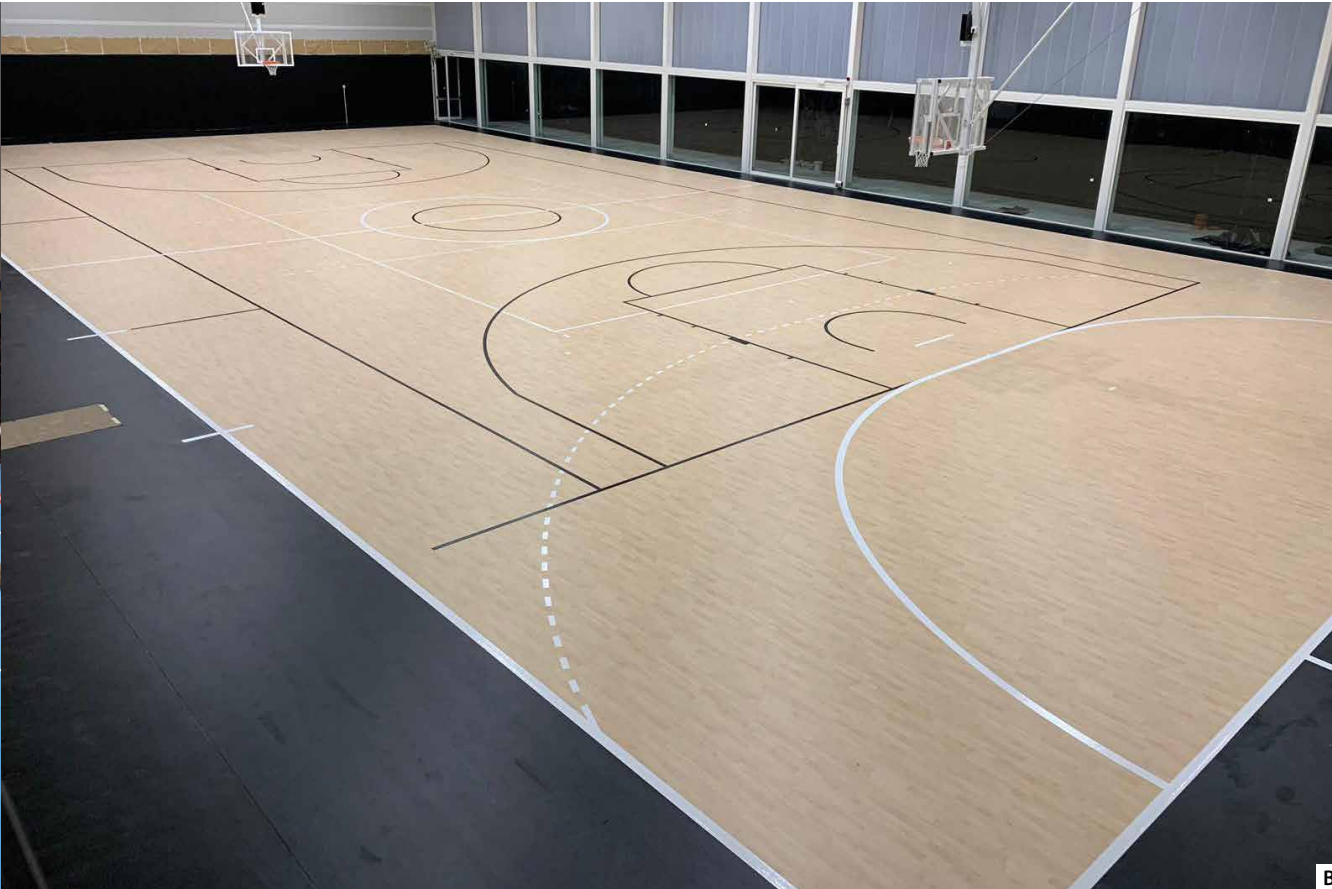
*Imagen/Picture A*



P256 – TF

Pavimento GRABO ELITE de PVC espesor 6 mm. con certificados FIBA & IHF.  
GRABO ELITE flooring made of PVC thickness 6 mm. certified by FIBA & IHF.

*Imagen/Picture A*



**P256 – T**

Pavimento GRABO GYMFIT 60 de PVC espesor 6 mm.

GRABO GYMFIT 60 flooring made of PVC thickness 6 mm.

*Imagen/Picture B*

**P251 – T**

Pavimento GRABO GYMFIT 50 de PVC espesor 5 mm.

GRABO GYMFIT 50 flooring made of PVC thickness 5 mm.

*Imagen/Picture B*

**P253 – T**

Pavimento GRABO START de PVC espesor 4 mm.  
GRABO START flooring made of PVC thickness 4 mm.

*Imagen/Picture B*

**P259 – SMS**

Pavimento GRABO STAMINA de PVC espesor 2 mm.  
GRABO STAMINA flooring made of PVC thickness 2 mm.



# A

POLIDEPORTIVOS INDOOR FLOORINGS  
FABRICADOS EN PVC MADE OF PVC

## P258 – TS

Pavimento GRABO ROCKET especialmente diseñado para tenis de mesa, de PVC espesor 3,8 mm.

GRABO ROCKET flooring especially design for table tennis, made of PVC thickness 3,8 mm.

*Imagen/Picture A*



A

## P252 – TD

Suelo de danza bicolor.

Dance floor.

*Imagen/Picture B*



B

## 42209

Pavimento Taraflex CONFORT espesor 12,5 mm.

Taraflex flooring CONFORT thickness 12,5 mm.

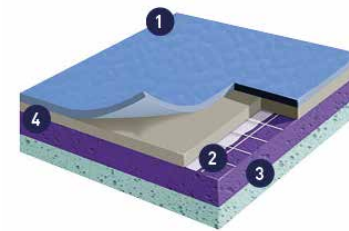
*Imagen/Picture C*

## 45021

Pavimento Taraflex PERFORMANCE espesor 9 mm.

Taraflex flooring PERFORMANCE thickness 9 mm.

*Imagen/Picture C*



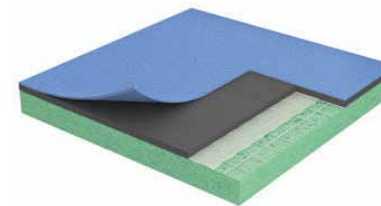
- 1 Triple Acción ProtecSol®.
- 2 D-Max™.
- 3 CXP™ HD.
- 4 Sanosol.

45017

Pavimento Taraflex EVOLUTION  
espesor 7,5 mm.

Taraflex flooring EVOLUTION  
thickness 7,5 mm.

*Imagen/Picture C*



- Superficie con tratamiento PUR.
- Compuesto 100% de PVC.
- Soporte de espuma de células cerradas.

45016

Pavimento Taraflex MULTI -  
USE espesor 6,2 mm.

Taraflex flooring MULTI - USE  
thickness 6,2 mm.

*Imagen/Picture C*

42207

Pavimento Taraflex SURFACE espesor 2,1 mm.  
Taraflex flooring SURFACE thickness 2,1 mm.

*Imagen/Picture C*

45022

Pavimento RECREATION 60 espesor 6 mm.  
RECREATION 60 flooring thickness 6 mm.

*Imagen/Picture C*

45015

Pavimento RECREATION 45 espesor 4,5 mm.  
RECREATION 45 flooring thickness 4,5 mm.

*Imagen/Picture C*



A



45090

Pavimento de madera STRONG AIR ELITE con certificado FIBA.

STRONG AIR ELITE flooring made of wood.  
Certified by FIBA.

*Imagen/Picture C*

45089

Pavimento de madera SPRING AIR ELITE con certificado FIBA.

SPRING AIR ELITE flooring made of wood.  
Certified by FIBA.

*Imagen/Picture C*

45081

Pavimento de madera JUMP AIR ELITE.  
JUMP AIR ELITE flooring made of wood.

*Imagen/Picture C*

45082

Pavimento de madera JUMP AIR BASIC.  
JUMP AIR BASIC flooring made of wood.

*Imagen/Picture C*



A



C

45086

Pavimento de madera desmontable SPEED - LOCK.  
SPEED- LOCK dismantlable flooring  
made of wood.

*Imagen/Picture A-B*



B



42200B

Lámina antihumedad VAPOREX T de 1,3 mm.  
T VAPOREX damp proof membrane for protection against moisture and for quicker installation 1.3 mm.

*Imagen/Picture D*

VAPOREX T



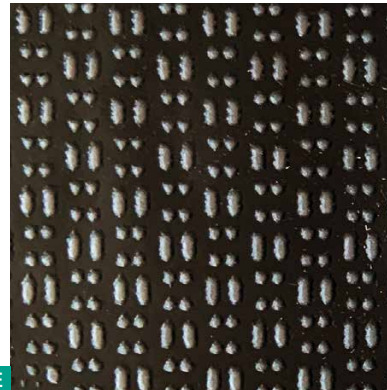
D

42200A

Lámina antihumedad VAPOREX 1,4 mm.  
VAPOREX damp proof membrane for protection against moisture and for quicker installation 1.4 mm.

*Imagen/Picture E*

VAPOREX



E

42200C

Lámina antihumedad VAPOREX 40 de 4 mm.  
VAPOREX 40 damp proof membrane for protection against moisture and for quicker installation 4 mm.

*Imagen/Picture F*

VAPOREX 40



F

42210

Pavimento exterior en losetas NAOX.  
NAOX outdoor flooring in tiles.

*Imagen/Picture G*



G

42204

Pavimento interior en losetas NAOX.  
NAOX indoor flooring in tiles.

*Imagen/Picture G*

H



11095

Carro de transporte pavimento de madera desmontable.

Trolley for collecting portable wood flooring.

*Imagen/Picture H*



# A

## P251 – TP

Pavimento semi transparente PROTECSPORT T espesor 1,0 mm.  
PROTECSPORT T flooring thickness 1,0 mm.

*Imagen/Picture A*



A

## 32110

Pavimento PROTECSPORT negro / verde espesor 1,5 mm.  
Semi transparent PROTECSPORT flooring black / green thickness 1,5 mm.

*Imagen/Picture B*



B

## 32202B

Protección para suelos deportivos BATECO en rollo. Protección para salas deportivas cuando se utilizan para eventos públicos.  
BATECO protection synthetic roll for sport floorings. Suitable in indoor pavilions for protecting sport floorings for public events.

*Imagen/Picture C*



C

## 32202D

Carro recoge BATECO.  
Trolley for extending and collecting rolls of flooring BATECO.

*Imagen/Picture D*



D

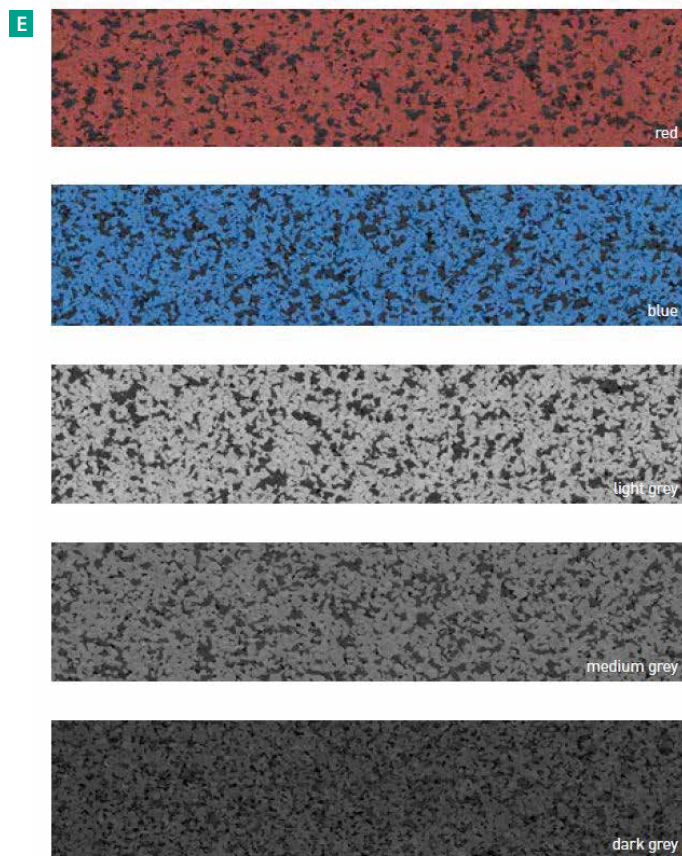




45046

Pavimento de caucho reciclado para gimnasios modelo Sportec pur color.  
Sportec pur color made of recycled rubber for gyms.

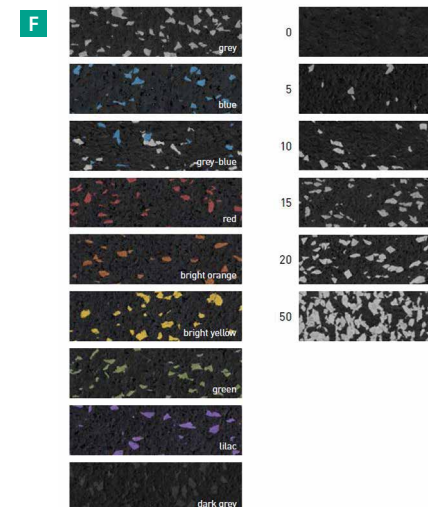
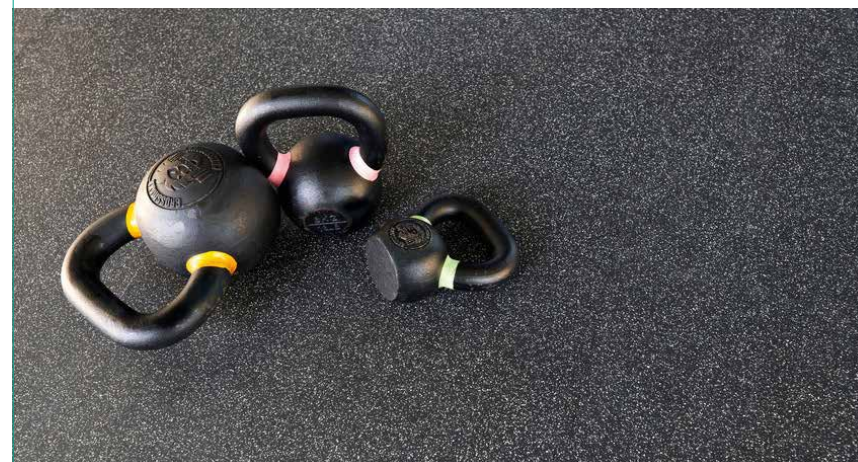
*Imagen/Picture E*



45045

Pavimento de caucho reciclado para gimnasios modelo Sportec.  
Sportec flooring made of recycled rubber for gyms.

*Imagen/Picture F*





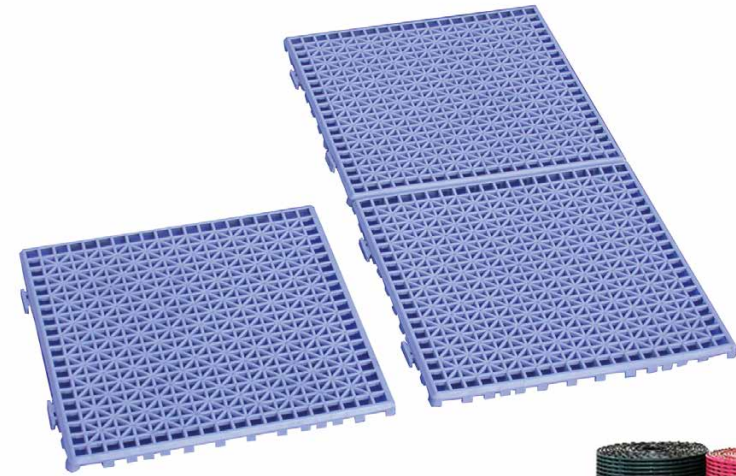
C

32102

Rejilla de PVC para vestuarios, duchas o piscinas.  
Dimensiones: 33 x 33 x 2 cm.

PVC tiles for changing rooms, showers, swimming pools.  
Dimensions: 33 x 33 x 2 cm.

*Imagen/Picture A*



A

32300

Pavimento HERONRIB 2000  
antideslizante con altura 10 mm.

HENRORIB 2000 flooring anti – slip height 10 mm.

*Imagen/Picture B*



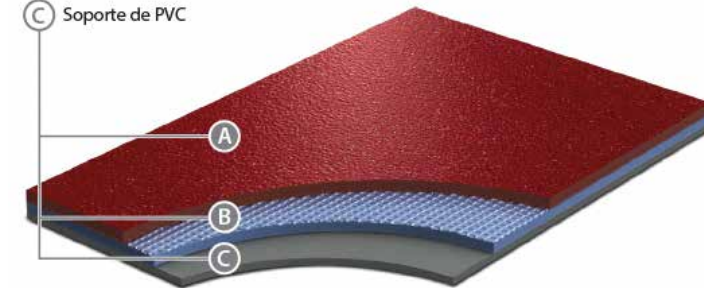
B

32300A

Pavimento modelo ECOSAFE con 2 mm. de espesor.  
ECOSAFE flooring 2 mm. thickness.

*Imagen/Picture C*

- (A) Capa superior de desgaste Easy Care con partículas minerales
- (B) Refuerzo de fibra de vidrio
- (C) Soporte de PVC



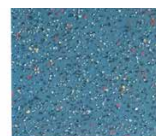
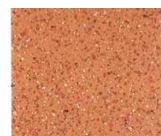
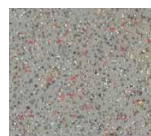
C



## ACOUSTIC



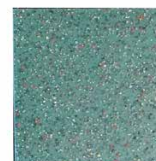
E



## DIAMOND



D



42202

Pavimento modelo DIAMOND con 2 mm. de espesor.

DIAMOND flooring, thickness 2 mm.

*Imagen/Picture D*

42203

Pavimento modelo ACOUSTIC con 2 mm. de espesor.

ACOUSTIC flooring, thickness 2 mm.

*Imagen/Picture E*

F



G



42205

Pavimento modelo FORTIS con 3,2 mm. de espesor.

FORTIS flooring, thickness 3,2 mm.

*Imagen/Picture F-G*



E

CESPED ARTIFICIAL ARTIFICIAL GRASS

47000

Césped artificial XTREME 60 para campos de fútbol fabricado en polietileno. Certificado nivel FIFA Quality PRO.

Artificial turf grass XTREME 60 for soccer fields made of polyethylene. Certified FIFA Quality PRO level.

*Imagen/Picture A-B*



A



B

47001

Césped artificial XP 60 para campos de fútbol fabricado en polietileno. Certificado nivel FIFA Quality PRO.

Artificial turf grass XP 60 for soccer fields made of polyethylene. Certified FIFA Quality PRO level.

*Imagen/Picture B-C*



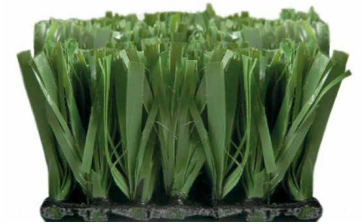
C

47002

Césped artificial MULTISPORT en verde fabricado en polipropileno de 25 mm.

Artificial turf grass MULTISPORT in green colour made of polypropylene 25 mm.

*Imagen/Picture B-D*



D

41001D

Césped artificial fibrilado PROTURF para pistas de pádel y tenis fabricado en polipropileno de 12 mm.

Artificial turf grass fibrillated PROTURF tennis and paddle courts made of polypropylene 12 mm.

*Imagen/Picture B-E*



E

41001F

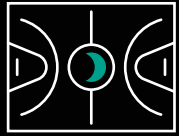
Césped artificial monofilamento DRIVEGREEN para pistas de pádel y tenis fabricado en polipropileno de 12 mm.

Artificial turf grass monofilament DRIVEGREEN tennis and paddle courts made of polypropylene 12 mm.

*Imagen/Picture B-F*



F



# PAVIMENTOS FLOORINGS



P. I. Oporto 1, 2. 47520 Castronuño (Valladolid) SPAIN

Tel.: [34] 983 866 333

Mail: [clientes@galvansport.com](mailto:clientes@galvansport.com)

[www.galvansport.com](http://www.galvansport.com)